

COMPANY PROFILE



HELPING HAND

TRANSPORT AND GENERAL CONTRACTING
SOLE PROPERTERSHIP LLC

OUR COMPANY OFFERS A
COMPREHENSIVE RANGE OF
SERVICES, INCLUDING:

- 1- CIVIL ENGINEERING
- 2- ELECTRICAL ENGINEERING
- 3- LAND SURVEY AND MAPPING
- 4- GATE AND FENCE INSTALLATION
- 5- INFRASTRUCTURE WORKS
- 6- BUILDING WORKS

OUR FOCUS IS ON DELIVERY HIGH QUALITY
RESULTS WHILE MAINTAINING COST EFFECTIVENESS





HELPING HAND
TRANSPORT AND GENERAL CONTRACTING
SOLE PROPRIETERSHIP LLC

ABOUT US

Introducing to Helping Hand LLC, where innovation meets infrastructure excellence! Born from the visionary minds of seasoned Civil and Electromechanical Engineers, with over a decade of dedicated service in the dynamic landscape of the United Arab Emirates, our mission is crystal clear to deliver projects of unparalleled quality, all while keeping costs down and efficiency soaring. We didn't just dream it; we've built it, and today, Helping Hand stands as a testament to our unwavering commitment to comprehensive infrastructure development. From the solid foundations of civil engineering to the intricate intricacies of electromech systems and the future-forward realm of transportation, we are your one - stop solution for end-to-end excellence in the world of construction. Welcome to the future of infrastructure development; welcome to Helping Hand LLC.



HELPING HAND

TRANSPORT AND GENERAL CONTRACTING
SOLE PROPRIETORSHIP LLC

OUR VISION, MISSION & MOTO

OUR VISION

To lead the future of infrastructure development, driven by unwavering excellence and customer satisfaction.

OUR MISSION

Striving to lead the evolution of infrastructure development by consistently delivering high-quality, cost-effective, and efficient projects across all construction domains, all while ensuring the utmost customer satisfaction.

OUR MOTO

Elevating Infrastructure with Innovation and Excellence.



OUR SERVICES



HELPING HAND
TRANSPORT AND GENERAL CONTRACTING
SOLE PROPRIETERSHIP LLC



CIVIL ENGINEERING

At HELPING HAND LLC, we recognize that the civil infrastructure and building industry form the very backbone of the UAE's thriving economy. Since our inception, we have ...



ELECTRICAL ENGINEERING

At HELPING HAND LLC, our Electrical Engineers and Supervisors are the guardians of power, fluent in the languages of Regulations and Supervision Bureau (RSB), ADDC, DEWA, and FEWA ...



LAND SURVEY & MAPPING

Helping Hand LLC recognizes the pivotal role of the civil infrastructure and building industry in the UAE economy. Therefore, from its inception, HH has been actively involved in civil construction ...



GATE & FENCE INSTALLATION

In today's ever-changing world, security has become a top priority. Whether it's safeguarding your property or protecting your loved ones, the need for reliable security solutions cannot be overstated ...



INFRASTRUCTURE WORKS

"Infrastructure works" is a commonly used term that refers to various construction or maintenance activities undertaken on roads and highways. These activities are conducted with the aim of enhancing ...



BUILDING WORKS

Whether you're envisioning a new architectural marvel, seeking to breathe new life into existing facilities, or looking to make strategic alterations and improvements, we are your trusted partner ...



MAINTENANCE WORKS

We take pride in our commitment to excellence, offering comprehensive maintenance solutions tailored to your specific needs. With our expertise, we keep your valuable assets in optimal working ...



TRANSPORTATION

At HH, we recognize the paramount importance of transportation in the construction industry. Our transportation services are meticulously designed to facilitate the seamless movement ...



MEP WORKS

HH has completed plumbing projects with all of these activities in all types of constructions, be it Road Infrastructure, High Rise Buildings, Malls, Factories, Schools, Hospitals, Villas etc ...



HELPING HAND
TRANSPORT AND GENERAL CONTRACTING
SOLE PROPRIETERSHIP LLC

OUR TEAM

GENERAL MANAGER

Sets Overall Program quality objectives, agrees New Platform quality costs and manages escalated quality issues. Championing the project and raising awareness at senior level. Approving strategies, implementation plan, project scope and milestones.

PLANNING MANAGER

Managing and leading the project team. Recruiting project staff and consultants. Managing coordination of the partners and working groups engaged in project work. Developing and maintaining a detailed project plan. Managing project deliverables in line with the project plan.

QA/QC MANAGER

The preparation of the companies QA manual control and supervision of all amendments and revisions. Control and the distribution of all the companies' quality documentation. Monitor all quality related activities on the project.

HSE MANAGER

Contribute to the design of engineering solutions and produce detailed designs and specifications. Project requirements including: Project HSE Plans, HSE Philosophies, Fire Fighting Layouts, Fire and Gas Detection Layouts and Safety Key Plans.

PROJECT MANAGER

Managing and leading the project team. Developing and maintaining a detailed project plan. Managing project deliverables in line with the project plan. Recording and managing project issues and escalating where necessary. Resolving cross-functional issues at project level.

CIVIL ENGINEER

Monitor all quality related activities on the project. Perform all internal and external audits on behalf of the company's management. Verify contractor quality requirements are specified to vendors and contractor documentation submittals.

ELECTRICAL MANAGER

Implement, maintain, & improve electrical instruments, components, facilities, equipment, products, and systems for commercial, industrial, and domestic purposes. Direct and coordinate construction, installation, maintenance.

I.T ENGINEER

Participate in IT projects such as system upgrades, migrations, and new installations. Collaborate with other teams or departments to implement IT solutions. Implement and Maintain security protocols and firewalls.

ISO CERTIFICATIONS



Quality Management System

Helping Hand, is a well-respected construction company that is involved in a full range of Buildings construction, Roads Infrastructure, MEP and Security Projects.



Environment Management System

Helping Hand, is a well-respected construction company that is involved in a full range of Buildings construction, Roads Infrastructure, MEP and Security Projects.



OH & S Management System

Helping Hand, is a well-respected construction company that is involved in a full range of Buildings construction, Roads Infrastructure, MEP and Security Projects.



Certificate of Registration

HELPING HAND TRANSPORT AND GENERAL CONTRACTING

PO BOX NO- 77682, OFFICE # 02, GAYATHI SANAYA PLOT: 49, ABU DHABI - U.A.E.

has been assessed and Certified by Otabu Certification Pvt. Ltd. as meeting the requirements of:

ISO 9001:2015

Quality Management System

For the following scope of activities:

- BUILDINGS MAINTENANCE
- ALL KIND BUILDING PROJECTS CONTRACTING
- TRANSPORT OF MATERIALS ASSEMBLY LIGHT TRUCKS
- TRANSPORT OF MATERIALS ASSEMBLY HEAVY TRUCK
- WASTE WATER TRANSPORTATION
- ONSHORE AND OFFSHORE OIL AND GAS FIELD ACTIVITY SERVICES

Date of Initial Registration: 30 March 2023
Date of this Certificate: 30 March 2023
Certificate Expiry: 29 March 2025
Subject to the company's conformity to system in the registered standard

1st Surveillance Due: 29 March 2024
2nd Surveillance Due: 29 March 2025
Issue & Revision No: 01 & NA

Certificate No:- 0330Q160423
To Verify this Certificate please visit at www.otabucert.com



Dr. Anita Gupta
(Managing Director)

*Validity of the certificate is subject to successful completion of surveillance audit on or before due date (in case surveillance audit is not allowed to be conducted, this certificate shall be suspended/withdrawn). *This Certificate of Registration remains the Property of Otabu Certification Pvt. Ltd. and shall be returned immediately upon request.
Email:- info@otabucert.com website:- www.otabucert.com



Certificate of Registration

HELPING HAND TRANSPORT AND GENERAL CONTRACTING

PO BOX NO- 77682, OFFICE # 02, GAYATHI SANAYA PLOT: 49, ABU DHABI - U.A.E.

has been assessed and Certified by Otabu Certification Pvt. Ltd. as meeting the requirements of:

ISO 14001:2015

Environmental Management System

For the following scope of activities:

- BUILDINGS MAINTENANCE
- ALL KIND BUILDING PROJECTS CONTRACTING
- TRANSPORT OF MATERIALS ASSEMBLY LIGHT TRUCKS
- TRANSPORT OF MATERIALS ASSEMBLY HEAVY TRUCK
- WASTE WATER TRANSPORTATION
- ONSHORE AND OFFSHORE OIL AND GAS FIELD ACTIVITY SERVICES

Date of Initial Registration: 30 March 2023
Date of this Certificate: 30 March 2023
Certificate Expiry: 29 March 2025
Subject to the company's conformity to system in the registered standard

1st Surveillance Due: 29 March 2024
2nd Surveillance Due: 29 March 2025
Issue & Revision No: 01 & NA

Certificate No:- 0330E160523
To Verify this Certificate please visit at www.otabucert.com



Dr. Anita Gupta
(Managing Director)

*Validity of the certificate is subject to successful completion of surveillance audit on or before due date (in case surveillance audit is not allowed to be conducted, this certificate shall be suspended/withdrawn). *This Certificate of Registration remains the Property of Otabu Certification Pvt. Ltd. and shall be returned immediately upon request.
Email:- info@otabucert.com website:- www.otabucert.com



Certificate of Registration

HELPING HAND TRANSPORT AND GENERAL CONTRACTING

PO BOX NO- 77682, OFFICE # 02, GAYATHI SANAYA PLOT: 49, ABU DHABI - U.A.E.

has been assessed and Certified by Otabu Certification Pvt. Ltd. as meeting the requirements of:

ISO 45001:2018

Occupational Health & Safety Management System

For the following scope of activities:

- BUILDINGS MAINTENANCE
- ALL KIND BUILDING PROJECTS CONTRACTING
- TRANSPORT OF MATERIALS ASSEMBLY LIGHT TRUCK
- TRANSPORT OF MATERIALS ASSEMBLY HEAVY TRUCK
- WASTE WATER TRANSPORTATION
- ONSHORE AND OFFSHORE OIL AND GAS FIELD ACTIVITY SERVICES

Date of Initial Registration: 30 March 2023
Date of this Certificate: 30 March 2023
Certificate Expiry: 29 March 2025
Subject to the company's conformity to system in the registered standard

1st Surveillance Due: 29 March 2024
2nd Surveillance Due: 29 March 2025
Issue & Revision No: 01 & NA

Certificate No:- 0330O160623
To Verify this Certificate please visit at www.otabucert.com



Dr. Anita Gupta
(Managing Director)

*Validity of the certificate is subject to successful completion of surveillance audit on or before due date (in case surveillance audit is not allowed to be conducted, this certificate shall be suspended/withdrawn). *This Certificate of Registration remains the Property of Otabu Certification Pvt. Ltd. and shall be returned immediately upon request.
Email:- info@otabucert.com website:- www.otabucert.com

ENVIRONMENT POLICY



HELPING HAND
TRANSPORT AND GENERAL CONTRACTING
SOLE PROPRIETERSHIP LLC

HH is a well-respected construction company that is involved in a full range of Buildings construction, Roads Infrastructure, MEP and Security Projects. We provide our Professional contracting services throughout the region of United Arab Emirates. It is the policy of HH to provide a service that exceeds our client's expectations. We do this, by attracting the most qualified employees and by seeking the most reputable and high-quality sub-contractors and products.

HH has adopted Environmental Management system that complies with the International Standard ISO 14001:2015.

HH has implemented an Environmental Management System (EMS) which forms part of the company's Integrated Management System. We maintain compliance with applicable environmental requirements and therefore are fully committed to following the ESTIDAMA regulations.

HH is a flag bearer of sustainable development and has environmental sustainability at the core of all its activities.

POLICY CLARIFICATION:

HH is committed to the following objectives:

- Conserving our natural and cultural environment and using natural resources efficiently.
- Working towards ecologically sustainable development with regard to raw materials used, energy sources usage and the environmental impact of our activities.
- Adopting a reduce, re-use and recycle approach
- Adopting the best available and affordable technologies
- Continuously improving our Integrated Management System which incorporates Quality, Occupational Safety and Health and Environmental Management Systems
- Complying with applicable legal and other environmental requirements required to appropriately manage our environmental aspects
- Ensuring that company employees and contractors are informed about this Policy and are aware of their responsibilities Professional, Reliable and Affordable Services

PROFESSIONAL, RELIABLE AND AFFORDABLE SERVICES

OHS (OCCUPATIONAL HEALTH AND SAFETY) POLICY



HELPING HAND
TRANSPORT AND GENERAL CONTRACTING
SOLE PROPRIETORSHIP LLC

HH is a well-respected construction company that is involved in a full range of Buildings construction, Roads Infrastructure, MEP and Security Projects. We provide our Professional contracting services throughout the region of United Arab Emirates. It is the policy of HH to provide a service that exceeds our client's expectations. We do this by attracting the most qualified employees and by seeking the most reputable and high-quality sub-contractors and products.

HH has adopted Occupational Health & Safety Management system that complies with the International Standard OHSAS 18001:2007

As part of HH OH & S policy, HH has:

- Provided and implemented safe systems of work.
- Provided and maintained safe places of work, free from risks to health.
- Provided and maintained safe working equipment.
- Provided information, instructions, trainings and supervision to all its personal.
- Ensured that all employees are competent to do their work
- Consulted with its employees on matters affecting their health and safety.
- Encouraged the participation of all employees in improving health and safety standards.
- Strived to continuously improve health and safety management and performance.
- Provided and maintained sufficient resources for the management of health and safety.
- Implemented a system of monitoring, reviewing and reporting on health and safety performance issues.
- The HH five rules at work are as follows:
 - I assess and control risks before starting any task.
 - I only perform activities for which I am authorized.
 - I never override or misuse health and safety devices and I always use the required PPE.
 - I report all incidents.

PROFESSIONAL, RELIABLE AND AFFORDABLE SERVICES

QUALITY POLICY



HELPING HAND
TRANSPORT AND GENERAL CONTRACTING
SOLE PROPRIETERSHIP LLC

HH is a well-respected construction company that is involved in a full range of Buildings construction, Roads Infrastructure, MEP and Security Projects. We provide our Professional contracting services throughout the region of United Arab Emirates. It is the policy of HH to provide a service that exceeds our client's expectations. We do this, by attracting the most qualified employees and by seeking the most reputable, high quality sub-contractors and products.

To ensure that these objectives are met, HH has adopted a quality management system that complies with the International Standard BS EN ISO 9001:2015. This Quality System will provide clients with the assurance that the projects completed by HHT&GC will be of a consistently high standard.

The Management of HH is totally committed to the implementation and maintenance of this quality management system and, in turn, expects every employee to contribute and support it. All employees of the company are aware of these quality objectives and strive to meet them.

The Quality Management System and Quality Policy will be continuously reviewed and updated as part of HH commitment to develop and continuously improve the processes and procedures of its business. This will be evident after reviewing the below quality objectives along with the HH Business Plan and strategic future Plan of the company.

- Use quality products from reputable suppliers.
- Engage competent and resourced sub-contractors.
- Ensure that the company resources are managed as one cohesive process.
- Perform all activities according to project plans and timetable.
- Enhance the skills of our employees through conducting suitable training and awareness programs
- Recognize staff as our most valuable asset and ensure that their endeavors and efforts receive due attention and recognition of the management.
- Comply with all the requirements of the government regulations of UAE.
- Create and maintain a safe working environment for all staff, sub-contractors and visitors.

PROFESSIONAL, RELIABLE AND AFFORDABLE SERVICES

IBM (INTEGRATED BUSINESS MANAGEMENT) **POLICY**



HELPING HAND
TRANSPORT AND GENERAL CONTRACTING
SOLE PROPRIETERSHIP LLC

HH is a well-respected construction company that is involved in a full range of Buildings construction, Roads Infrastructure, MEP and Security Projects. We provide our Professional contracting services throughout the region of United Arab Emirates. It is the policy of HH to provide a service that exceeds our client's expectations. We do this, by attracting the most qualified employees and by seeking the most reputable and high-quality sub-contractors and products.

HH believes that it is important in business today to keep a creditable reputation, to be competitive and to maintain a sustainably profitable business. It is inevitable for the success of the company that all stakeholders put their support behind our business activities as well our management to achieve our goals. Thus, it has been decided to model our business systems on pas 99:2006 (Specification of Common Management System Requirements as a framework for Integration).

OUR MAIN OBJECTIVES ARE:

- Make sure that all stakeholders of HH are proficient with the new integrated system
- Consult all employees about quality, Health, Safety and Environment, work practices and the use of equipment.
- Allocate enough resources required to effectively implement all Quality and HSE issues.
- Ensure Continuous review and monitoring through internal auditing to government and third party compliance.
- Ensure 0 injuries on all HH sites.
- Minimize the negative aspects of work activities and their impact on Quality and HSE.
- Adopt and employee-oriented culture in the company that focuses on quality, improvement and outstanding performance.
- Unify the concepts of employee personal development as well as organizational development as both are necessary for the growth of the company.
- Copy best practices through all work activities carried out by HH staff.

OUR MANAGEMENT SYSTEM:

- Will focus on continuous improvement in all our activities.
- Will identify threats to Sustainability with the help of Risk Management Philosophies.
- Will be documented, maintained and implemented so that consistent level of service is realized.
- Will be managed and monitored by our senior management but will recognize the efforts of staff in achieving our objectives.
- Will integrate the concepts of the core management system standards into a cohesive and functional Business Management System.
- Will substantiate the conformance to standards by auditable evidence.

EQUAL OPPORTUNITY POLICY



HELPING HAND
TRANSPORT AND GENERAL CONTRACTING
SOLE PROPRIETERSHIP LLC

HH is a well-respected construction company that is involved in a full range of Buildings construction, Roads Infrastructure, MEP and Security Projects. We provide our Professional contracting services throughout the region of United Arab Emirates. It is the policy of HH to provide a service that exceeds our client's expectations. We do this, by attracting the most qualified employees and by seeking the most reputable and high-quality sub-contractors and products.

HH is an equal opportunity employer and doesn't discriminate against employees and job Applicants on the basis of gender, age, race, nationality etc.

HH has implemented an Equal Opportunity Policy which forms part of the company's Integrated Management System. The diversity of HH employees is its core strength bringing together a variety of skills, minds and experiences and putting it to serve the objectives of the company.

HH hires, promotes and assign duties to its employees purely on merit and it doesn't discriminate people based on:

Gender: HH believes that Development not engendered is development endangered and offers equal opportunities of employment and professional growth to all genders without any discrimination.

Age: HH takes employment decisions based on merit and engages the right people for the right job. There is no specific policy screening out the candidates of any particular age group. In this regard, the company follows the laws of the country where it has its operations.

Disability: HH doesn't have any policy of barring potential employees based on any disability. However, it follows the laws of the countries where it keeps its operations.

Religion, Race or Nationality: HH believes in merit above all and hires people of all nationalities and religions without discrimination. This policy is not only adopted for employees but for all business relations including subcontractors and suppliers. The variety of people working with HH is its core strength.

PROFESSIONAL, RELIABLE AND AFFORDABLE SERVICES

OUR MAJOR PROJECTS



HELPING HAND
TRANSPORT AND GENERAL CONTRACTING
SOLE PROPRIETERSHIP LLC

S. No	Civil Projects	Work	Client
1	Villa Construction LPO# DK-HH-0188	New Villa construction	Mr. Sultan Ahmed Salim Hassan al Mansoori, Gayathi Ruwais
1	Al Jaber Company Pond Maintenance Work LPO# AN/OP/22000045	Installation of High-Density Polythene sheet for Ponds/Lagoon and Maintenance of Salt Ponds/Lagoon	AL Jaber Group
2	Earth Work, Egypt Embassy, Abu Dhabi, UAE LPO# OGC-LPO-013	Manual Excavation & Installation of Manholes and Pipes networking	ASGC & Ontak General Contracting
3	Infrastructure Security Project, Gayathi & old E11 check point, Ruwais, Abu Dhabi LPO# ESSS-PO-005963	Supply & installation of scaffolding works for LV Rooms and Fire Rooms for both check points, Ruwais, Abu Dhabi	Etimad Strategic security solution – sole proprietorship LLC
4	Infrastructure Security Project, Gayathi & old E11 check point, Ruwais, Abu Dhabi LPO# ESSS-PO-006109	Supply and installation of Glass Partition in Main post building for both check point	Etimad Strategic security solution – sole proprietorship LLC
5	Infrastructure Security Project, Gayathi & old E11 check point, Ruwais, Abu Dhabi LPO# ESSS-PO-006109	Installation of GI Stairs with SS guard rail for both check point, Ruwais, Abu Dhabi	Etimad Strategic security solution – sole proprietorship LLC
6	Infrastructure Security Project, Gayathi & old E11 check point, Ruwais, Abu Dhabi LPO# ESSS-PO-006133	Removing of Damaged Pyramid concertina from site & shifted to Etimad Office. Installing and clipping new pyramid concertina as per LPO	Etimad Strategic security solution – sole proprietorship LLC (Maintenance Dept)
7	Transportation	Supply Hilux on Monthly Basis to Bin Mansour Transport	Bin Mansour Transport

OUR MAJOR PROJECTS



HELPING HAND
TRANSPORT AND GENERAL CONTRACTING
SOLE PROPRIETERSHIP LLC

8	Transportation	Supply Heavy Bus 64-Seater on Monthly Basis to Bin Mansour Transport	Bin Mansour Transport
9	Infrastructure Security Project, Gayathi & old E11 check point, Ruwais, Abu Dhabi LPO# ESSS-PO-006188	Remaining Works for both check point	Etimad Strategic security solution – sole proprietorship LLC
10	SMT Tower shifting Project, Ruwais, Abu Dhabi LPO# AMCP-590-23M4	Dismantling, shifting and Re-installation of SMT Tower. Making new Concrete Pad for SMT Tower. Excavation, Installing PVC conduit with backfilling	AL Makamin Commercial Projects LLC, Main Contractor Etimad (ESSS)
11	Cast in situ Duct bank & Backfilling Project, Egypt Embassy, Abu Dhabi, UAE	Cast in situ Duct bank & Backfilling for manholes & pipes networking Project, Egypt Embassy, Abu Dhabi, UAE	ASGC & Ontak General Contracting
12	Additional Work, GCP & OLD E11 Checkpoint, Ruwais	Infrastructure works, building installation, civil and electrical works	Etimad Strategic security solution – sole proprietorship LLC
13	Shifting, installation testing & commissioning of RMU Unit at Fujairah	Shifting, installation testing & commissioning of RMU Unit at Fujairah (S Tower: 01, 02 and 06)	Etimad Strategic security solution – sole proprietorship LLC
14	Maintenance Work of MOT, S Tower 1-6	Replace and maintenance of doors, replace hinges, locks, paint works etc at Fujairah Tower 1, 2, 3, 4, 5, 6	Etimad Strategic security solution – sole proprietorship LLC
15	Testing and commissioning of S tower Fire alarm system and Electrical DP	At Haweela, Western Region	Etimad Strategic security solution – sole proprietorship LLC
16	Parameter Fence Installation Ruwais	Parameter RDC Fence Repair and Installation Bourage Project Ruwais	Micco Logistic

OUR PROJECTS SITE PICTURES



HELPING HAND
TRANSPORT AND GENERAL CONTRACTING
SOLE PROPRIETERSHIP LLC

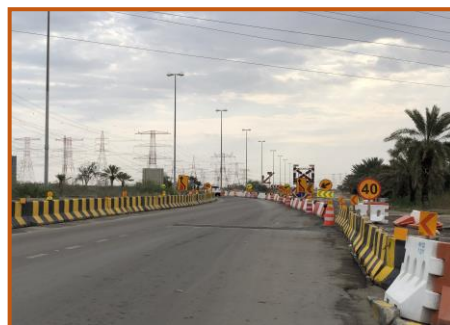
ASPHALT WORK



PIPE LINE WORK



TRAFFIC MANAGEMENT



OUR PROJECTS SITE PICTURES



HELPING HAND
TRANSPORT AND GENERAL CONTRACTING
SOLE PROPRIETERSHIP LLC

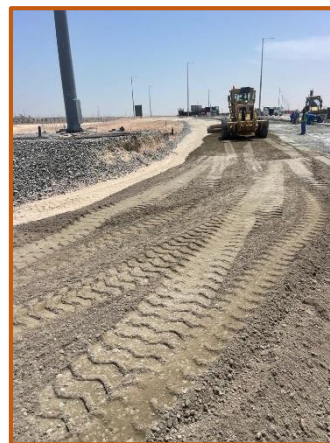
GATE INSTALLATION



FENCE INSTALLATION



CONSTRUCTION WORK



OUR PROJECTS SITE PICTURES

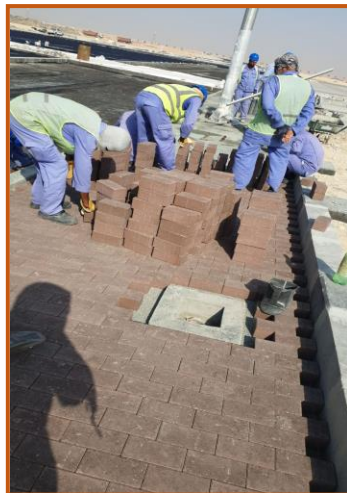


HELPING HAND
TRANSPORT AND GENERAL CONTRACTING
SOLE PROPRIETERSHIP LLC

STEEL FIXING AND SHUTTRING



INTERLOCK WORK



PGCC DUCTS WORK



GENERATOR INSTALLATION



GATCH BERM FOR PIPE LINE



TRM INSTALLATION

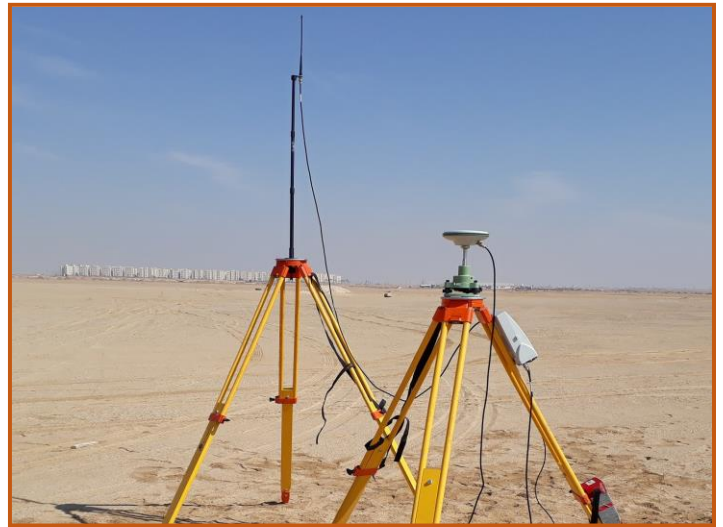


OUR PROJECTS SITE PICTURES



HELPING HAND
TRANSPORT AND GENERAL CONTRACTING
SOLE PROPRIETERSHIP LLC

LAND SURVEY AND MAPPING



OUR MAJOR CLIENTS



HELPING HAND
TRANSPORT AND GENERAL CONTRACTING
SOLE PROPRIETERSHIP LLC



CONTACT US



(+971) 02 6280 835



WWW.HHTGC.COM



INFO@HHTGC.COM



**OFFICE #11, M FLOOR, GERMAN EXPERT
BUILDING, M4, MUSSAFFAH, ABU DHABI,
UNITED ARAB EMIRATES.**

